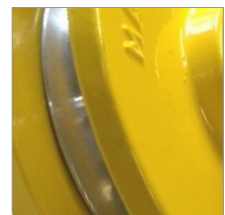




1



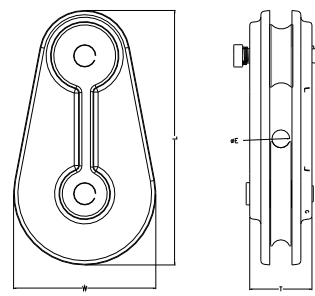
2



3

RP057 > LARGE CAST PULLEY.

ISC MANUFACTURES AN EXTENSIVE RANGE OF CAST ALUMINIUM PULLEYS WITH A 100KN -200KN MBS FOR THE ARBORIST INDUSTRY. ALL CAST PULLEYS CONFORM TO RELEVANT EUROPEAN AND ANSI STANDARDS.



- DIMENSIONS >**
- LENGTH > 258MM**
- WIDTH > 160MM**
- THICKNESS > 70MM**
- ROPE SIZE > 20MM**

- FEATURES > QUICK RELEASE SPRING CHEEK WITH ROPE BUSH.**
- MATERIAL > CAST ALUMINIUM ALLOY, WHEELS = ALUMINIUM 6082T6. AXEL = HIGH TENSILE STAINLESS STEEL.**
- ROPE SIZE > 20MM**
- MINIMUM BREAKING LOAD > 200KN**
- WORK LOAD LIMIT > 40KN**
- FINISH > POWDER COATED.**
- QUALITY > 100% INSPECTED**
- WEIGHT > 3432G**