



1



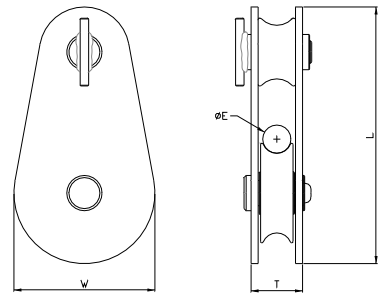
2



3

RP056 > SMALL SCREW LOCK PULLEY, STAINLESS STEEL OPTION AVAILABLE.

ISC MANUFACTURES AN EXTENSIVE RANGE OF CAST ALUMINIUM PULLEYS WITH A 100KN -200KN MBS FOR THE ARBORIST INDUSTRY. ALL CAST PULLEYS CONFORM TO RELEVANT EUROPEAN AND ANSI STANDARDS.



DIMENSIONS >
LENGTH > 182MM
WIDTH > 100MM
THICKNESS > 37MM
ROPE SIZE > 20MM

FEATURES > SWING CHEEK WITH RETAINED ROPE BUSH.

MATERIAL > SIDE CHEEK 5MM STEEL
 WHEELS = ALUMINIUM 6082T6.
 AXEL = HIGH TENSILE STAINLESS STEEL.

ROPE SIZE > 20MM
MINIMUM BREAKING LOAD > 100KN
WORK LOAD LIMIT > 20KN
FINISH > PLATED
QUALITY > 100% INSPECTED
WEIGHT > 1553G

INTERNATIONAL SAFETY COMPONENTS LTD
 Unit 1, Plot 2, Llandygai Industrial Estate,
 Bangor
 Gwynedd
 LL574YH

T - +44 (0) 1248 363 110
F - +44 (0) 1248 372 348
E - sales@iscwales.com
W - www.iscwales.com