



1



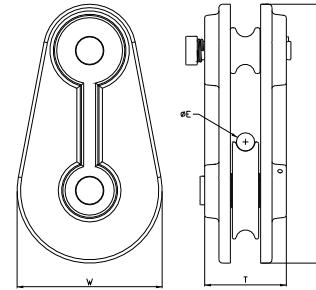
2



3

RP050/051 > SMALL CAST PULLEY
OPTIONAL WHEEL SIZES.

ISC MANUFACTURES AN EXTENSIVE RANGE OF CAST ALUMINIUM PULLEYS FOR THE ARBORIST INDUSTRY. ALL CAST PULLEYS CONFORM TO RELEVANT EUROPEAN AND ANSI STANDARDS.



DIMENSIONS >
LENGTH > 182MM
WIDTH > 100MM
THICKNESS > 65MM

FEATURES > QUICK RELEASE SPRING
 CHEEK WITH ROPE BUSH.
MATERIAL > CAST ALUMINIUM ALLOY,
 WHEELS = ALUMINIUM 6082T6.
 AXEL = HIGH TENSILE STAINLESS STEEL.
ROPE SIZE > RP050 13MM / RP051 16MM
MINIMUM BREAKING LOAD > 100KN
WORK LOAD LIMIT > 20KN
FINISH > POWDER COATED.
QUALITY > 100% INSPECTED
WEIGHT > RP050 > 1479G
 RP051 > 1565G