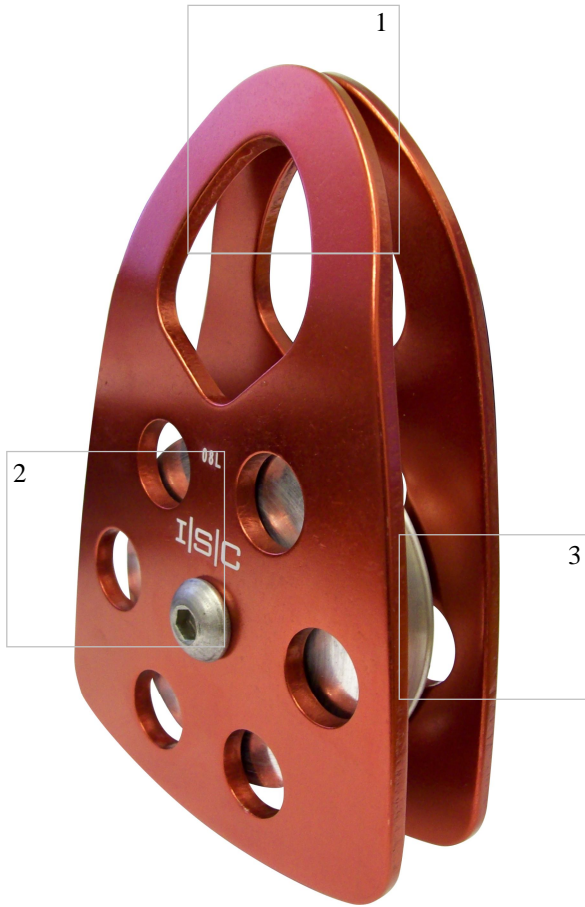
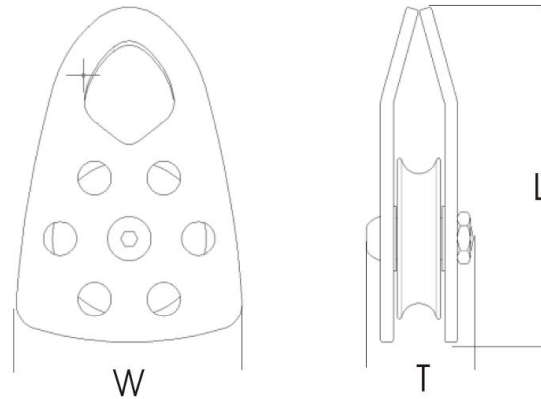


# PULLEYS > ALUMINIUM >



**RP018A** > LARGE PRUSSIK. COLOUR OPTIONS AVAILABLE.

ISC MANUFACTURES AN EXTENSIVE RANGE OF ALUMINIUM PULLEYS. FOR USE ON 10 MM - 16 MM ROPE. ALL ALUMINIUM PULLEYS CONFORM TO RELEVANT EUROPEAN AND ANSI STANDARDS.



**DIMENSIONS** >  
**LENGTH** > 156mm  
**WIDTH** > 106mm  
**THICKNESS** > 43mm

**MATERIAL** > HIGH STRENGTH ALUMINIUM ALLOY  
**ROPE SIZE** > 16mm  
**MINIMUM BREAKING STRENGTH** > 50kn  
**APPROVED STANDARDS** > BS EN 12278  
MEETS NFPA (1983) (G)  
**FINISH** > ANODISED  
**QUALITY** > 100% INSPECTED  
**WEIGHT** > 494g



1

2

3

**ISC**  
SOLUTIONS IN METAL

**International Safety Components Ltd**  
Unit 1, Llandygai Industrial Estate,  
Bangor  
Gwynedd  
LL57 4YH  
United Kingdom  
T- +44 (0) 1248 363 110  
F- +44 (0) 1248 372 348  
E- sales@iscwales.com  
W- www.iscwales.com